

CORNEA CONDITIONS

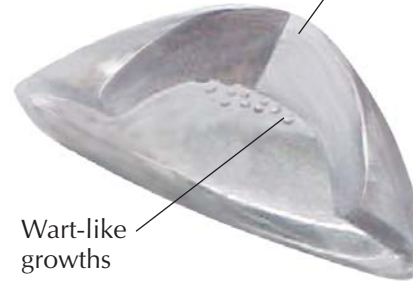
Bullae (vesicles filled with clear fluid)

Stroma thickens



Bullous Keratopathy

Stroma thickens



Wart-like growths

Fuch's Endothelial Dystrophy

Stroma



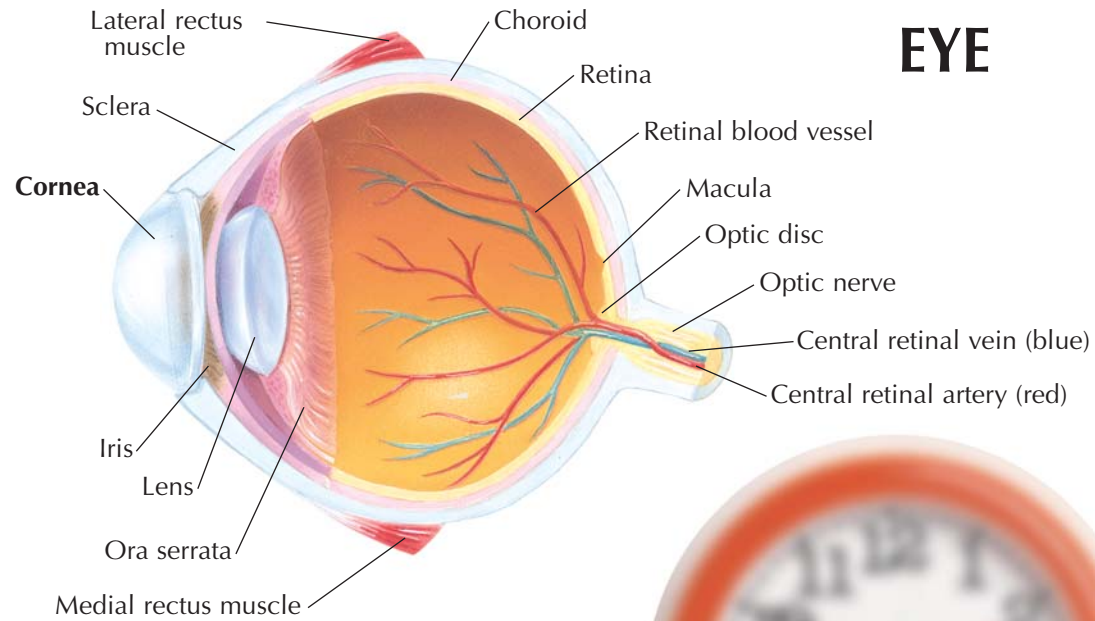
Normal

Stroma thins and protrudes



Keratoconus

EYE



CORNEA

Lying in front of the iris, the **cornea** is the transparent part of the outer layer of the eyeball. The cornea is responsible for most of the bending of light that enters the eye. Malformation diseases of the cornea manifest in numerous vision irregularities. These imperfections and growths on the surface of the cornea distort vision in many ways, from mild blurriness to total obscurity.

GPI ©2004



www.gpianatomicals.com